

## **Desire Lines | Debbie Dawson & Helle Helsner** Curated by Róisín Foley

Individual artist statements.

### **Debbie Dawson**

Returning to the family home in early 2021 for family reasons, Debbie had an extended period of time to reconnect with her rural childhood home and surrounding landscape which had a profound effect on her. She has researched themes of landscape as metaphor, using gathered photographic research, autobiographical references and memory to allow for the creation of imaginary worlds. By eschewing the often generic representation of a pastoral scene and investing her own experiences of the landscape she creates fantasy lands or types of utopian panoramas. Using specific, autobiographical moments and imbuing them with mystical and intangible interpretations she creates dream worlds as a means of expressing universal emotions. While the work has elements of autobiography included, she resists making these overly explicit.

The glass pieces act as a supplementary or ancillary support to the paintings. They are intended to be seen as pages from a sketchbook, as preliminary research to inform the paintings. By displaying the glass pieces as 'drawings' she is attempting to free the glass from its leaded constraints.

Debbie Dawson is a Cork born artist and educator working with painting and glass. She has exhibited widely both nationally and internationally and has work in both private and public collections including the National Museum of Ireland. She lectures part-time at the MTU Crawford College of Art & Design.

[www.debbiedawsonstainedglass.com](http://www.debbiedawsonstainedglass.com)

### **Helle Helsner**

Helle seeks to understand all aspects of the landscape, both in its concrete sense and in a semiotic sense, as comprising complex systems of symbols and signs, imagination, and myth. Language, culture, and environment define us but is also easily lost. Through a confluence of a gained personal knowledge, intuitive, and practice-based learning Helle tries to address this both through her work and through her choice of materials.

As a bronze caster with a strong connection to prehistoric methods and ethos, her work has always been concerned with the materials she uses and the landscape she works in.

Helle is exploring new ways of representing these original meanings in the landscape through sculpture and drawing: by casting specific elements of the physical landscape but also drawing parallels to it in her more traditional figurative work. Imagination and myth are integral to the Irish landscape and indeed the Irish language. By combining bronze with organic material and drawing with solid objects she wishes to blur the lines between worlds and invites us to see landscape through a different lens.

Danish born Helle Helsner is an artist and educator based in West Cork. She works primarily through sculpture and drawing with a foundation in ancient materiality. Helle has exhibited extensively nationally and internationally. She is a full time lecturer in MTU Crawford College of Art and Design.

[www.hellehelsner.com](http://www.hellehelsner.com)



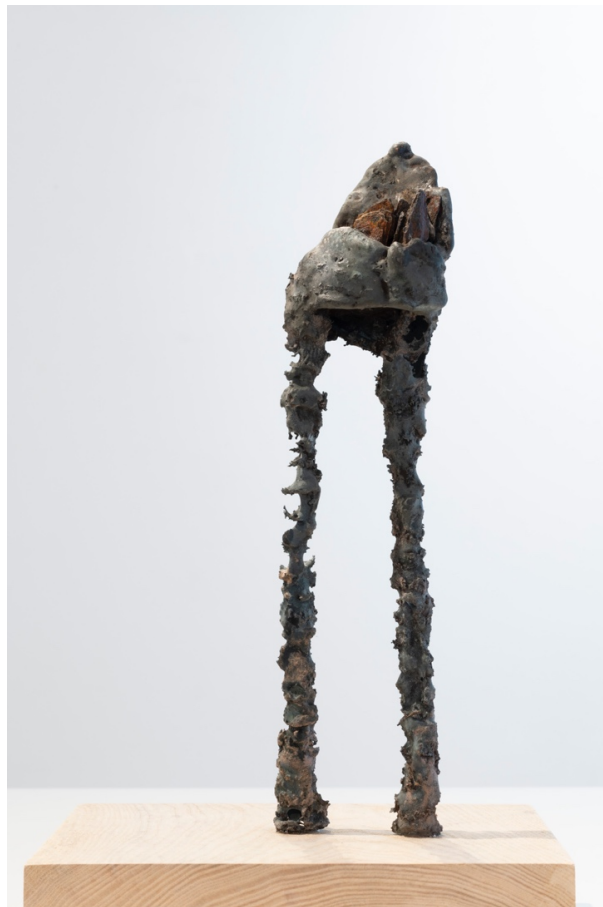
Helle & Debbie



Installation shot



Gallery shot



Core Helle Helsner



Outside Farm, Turpin's Debbie Dawson 2022